

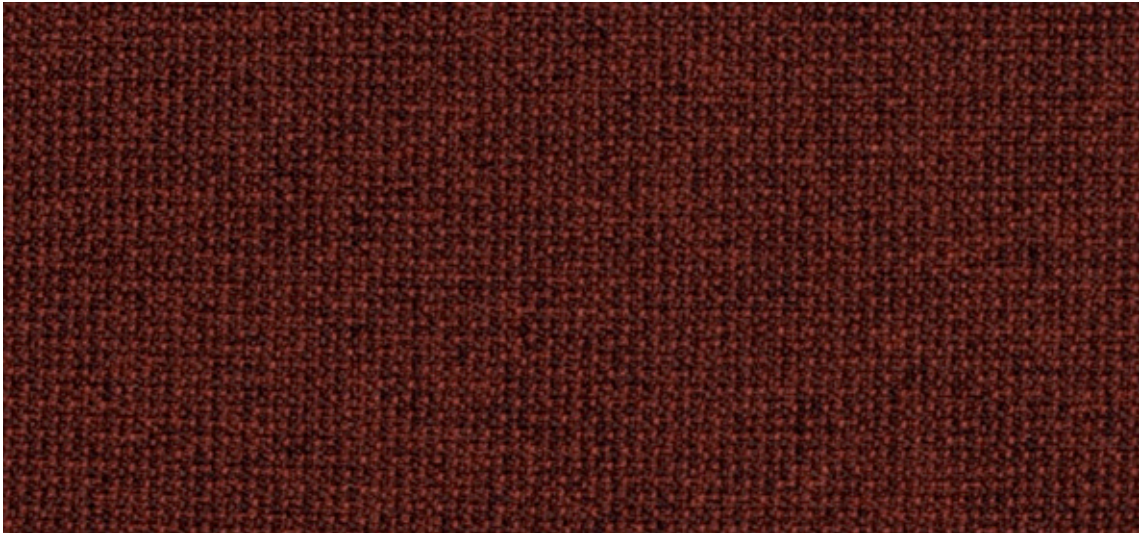
Q  
e  
T  
r  
e



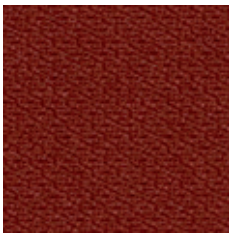
**TWIST™**  
**TWIST MELANGE™**

---

by Gabriel



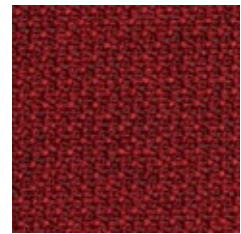
Twist Melange 63075



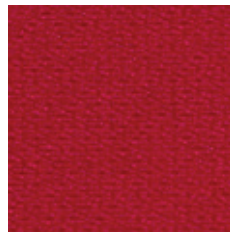
Twist 63075



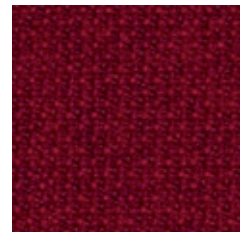
Twist 63012



Twist Melange 63012



Twist 64013



Twist Melange 64013



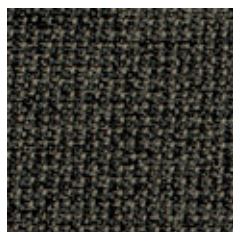
Twist 61104



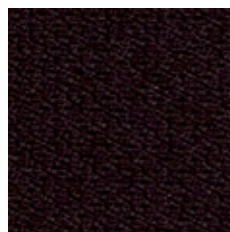
Twist Melange 61104



Twist 61103



Twist Melange 61103



Twist 61102

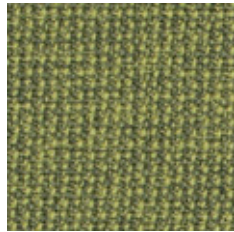


Twist Melange 61102

Please be aware that the PDF colour shades can appear different from the real fabric colours.



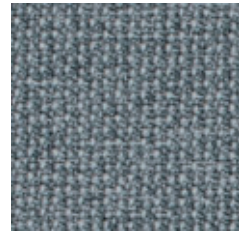
Twist 62066



Twist Melange 62066



Twist 60076



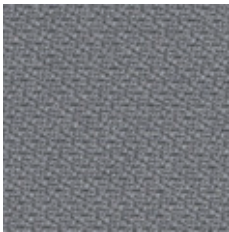
Twist Melange 60076



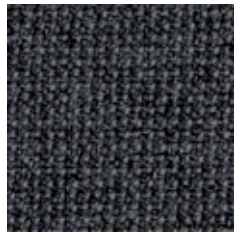
Twist 60004



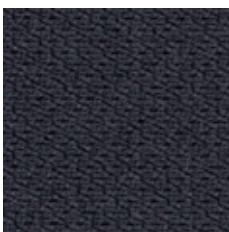
Twist Melange 60004



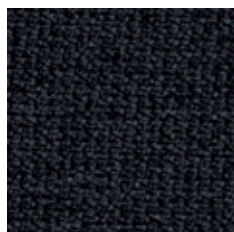
Twist 60011



Twist Melange 60011



Twist 60021



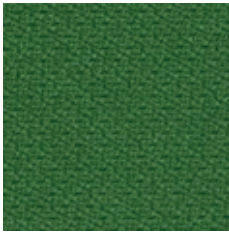
Twist Melange 60021



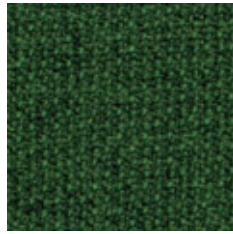
Twist 60999

Please be aware that the PDF colour shades can appear different from the real fabric colours.

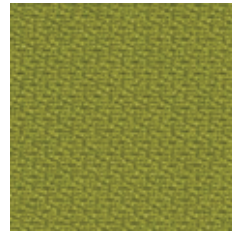




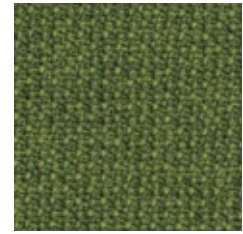
Twist 68120



Twist Melange 68120



Twist 68119



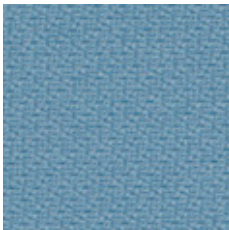
Twist Melange 68119



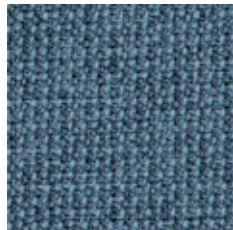
Twist 68118



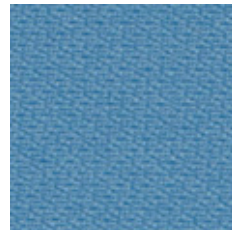
Twist Melange 68118



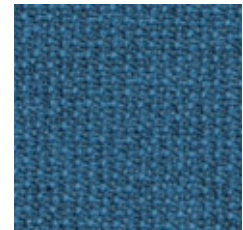
Twist 67004



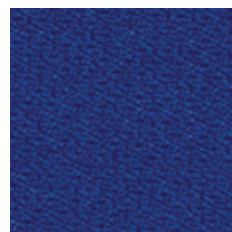
Twist Melange 67004



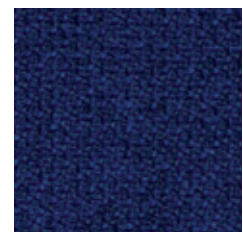
Twist 66018



Twist Melange 66018



Twist 65018



Twist Melange 65018

# TWIST™

## TWIST MELANGE™

Design no.	2445/2446/2447	
Fields of application	contract/screen	
Material	Trevira CS	100%
Weight	lin. metre approx. grams	345
Width	cm	170
Colour fastness to light	scale 1-8, max. 8 - EN ISO 105 - B02	5-7
Colour fastness to rubbing	scale 1-5, max. 5 - EN ISO 105x12 (wet/dry)	4-5/4-5
Cleaning	Wiping with a damp cloth.	
Flammability	DIN 4102-B1 · NF P 503-507 M1 · BS 476 part 7 Will also pass other flammability standards. Flame retardant performance is dependent upon the foam used and fireproof treatment.	
Design/Colours	Mette Krebs Petersen	
Subject to changes and colour differences		



QUALITY SYSTEM AND ENVIRONMENTAL MANAGEMENT SYSTEM  
DS/EN ISO 9001  
DS/EN ISO 14001

